

Contact details:

### **New Cross Gate Cutting**

Vesta Road Entrance, SE4 2NR

<https://www.wildlondon.org.uk/reserves/new-cross-gate-cutting>

[greatnorthwood@wildlondon.org.uk](mailto:greatnorthwood@wildlondon.org.uk)

### **Buckthorne Cutting**

Eddystone Railway Bridge  
Buckthorne Road, SE4 2DB

<https://www.fourthreserve.org.uk>

[fourth.reserve@yahoo.com](mailto:fourth.reserve@yahoo.com)

### **Garthorne Road Reserve**

Beadnell Road Entrance, SE23

<https://garthorneroadnaturereserve.com>

[contact@friendsofgarthorneroad.org.uk](mailto:contact@friendsofgarthorneroad.org.uk)

### **Devonshire Road Reserve**

170 Devonshire Road  
Forest Hill, SE23 3SZ

<http://www.devonshireroadnaturereserve.org-uk.com>

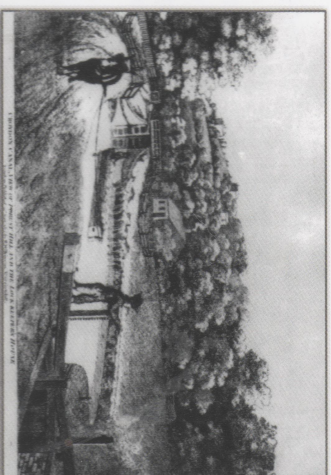
[infodevonshireroad@gmail.com](mailto:infodevonshireroad@gmail.com)



# The Green Line



Nature's Railway



*'The site itself has mature trees of species which are rarely found this near to central London and it is the best available in a wide area of surrounding suburbs...'*

David Dawson, previously Deputy director London Ecology unit 1990.

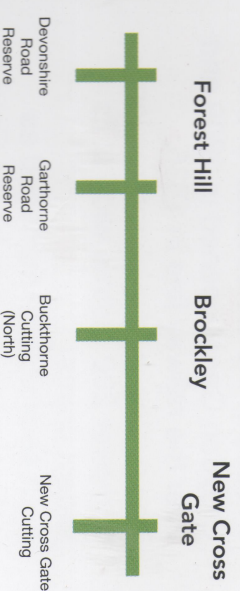
Fourth Reserve Conservation Trust

[www.fourthreserve.org.uk](http://www.fourthreserve.org.uk)  
[@FourthReserve](mailto:@FourthReserve)  
[fourth.reserve@yahoo.com](mailto:fourth.reserve@yahoo.com)

# The Green Line



Nature's Railway







The New Cross to Forest Hill railway cutting is a Metropolitan Site of Important Nature Conservation (SINC) as it contains probably the finest suite of railside wildlife habitat in London.

Areas formed what was once the Great North Wood which stretched across the high ridge of land between Deptford, Selhurst and Streatham, surviving as a mixture of oak-hornbeam woodland, wood-pasture commons, and arable land until the early 19th century. The area would have been disturbed as a result of the construction of the Croydon Canal opened in 1809 and later the railway line in 1836. The cutting is four kilometres long and over 200 metres wide at its widest points.

Four sections are managed as nature reserves, two by the Council (Devonshire and Garthorne), one by the Fourth Reserve Conservation Trust (Buckthorne) and the fourth by the London Wildlife Trust (New Cross Gate).

# The Green Line

## NEW CROSS GATE CUTTING

A secluded area of woodland with small grassy glades, set on the broad slopes of a deep railway cutting. Predominantly oak woodland with open glades some flowers are locally rare. Plants include Rosebay willowherb, Michaelmas-daisy, wood avens, lords-and-ladies, broad buckler-fern, hart's-tongue fern. Birds visiting the site include Kestrel and great spotted woodpecker.



## BUCKTHORNE ROAD CUTTING

This is the most recent nature reserve to be opened along the Forest Hill to New Cross railway cutting on March 2018. Point of interest is the abundant reed bed, a remnant of the Croydon canal. Giant Horsetail a plant scarce in London is also abundant and this site has a further connection with Lewisham's history as it sits beside a Roman Way of archeological importance.



## GARTHORNE ROAD CUTTING

This woodland has a canopy of sycamore and ash, plus an occasional oak. Less frequent trees and shrubs include hazel, blackthorn, sessile oak, yew, wild cherry, holly, holm oak and silver birch. A rare plant grows beneath sycamores. Bitter vetch is a plant normally associated with ancient woods. Birds nesting in the woodlands include tawny owl, great and lesser spotted woodpeckers.



## DEVONSHIRE ROAD CUTTING

Just inside the entrance a visitor in spring will be met with a stunning display of white, starlike flowers, ramsons or wild garlic. This is a plant of ancient woods and was here long before the site became a nature reserve. The woodland has a canopy of sycamore and ash, plus an occasional oak. There is a visitor centre and ponds which are popular with visiting school groups. Frogs, toads and smooth newts are all abundant here.

